

# Growing in Faith, Building for Tomorrow

St. Paul's Lutheran Church  
Capital Campaign



## Our Mission Statement

**Being children of God and his faithful servants, we are called by him and empowered to:**

**A**nnounce the good news of Jesus Christ.

**C**elebrate Christ's gracious gifts.

**T**each and nurture so all may grow in understanding of the gospel.

**S**erve and minister to the needs of all people.



# A Message from Our Campaign Chair

Dear Sisters and Brothers in Christ,

Perhaps you are amazed, just as I am, when you look across the page and realize there were members of St. Paul's years ago who sacrificed personally to help secure that our congregation would have an established place in our community. Who we are today is a reflection of who those people were, our values a continuation of theirs. Of course, they had no idea the Troupe of Acts (youth theater ministry) or Rejoicing Spirits ministry (enriching the spiritual lives of people with intellectual and developmental disabilities) would be created. The Amigos (our church handymen) and the Rare Birds (social group for those 55 and up) started after their time. Our original church building could not have handled our current enrollment of 150 Sunday School children. But don't you think they would be proud of what has been accomplished in the name of our Lord? I can almost hear your resounding "YES!"



We now stand on their shoulders and have an opportunity to help ensure that the needed—yes, even critical— influence of our church continues to not only serve those of us who enjoy its benefits today, but also those who will come after us. We have before us a substantial challenge, but we are living in a world that is desperately in need of our growing presence. I would not have volunteered for my role as chairperson had I not thought our task is possible.

I hope that my husband Dave and I will have the pleasure of your joining us as we stretch our faith and find the resources to invest in the life of St. Paul's and the lives of those that all of us, as the Body of Christ, are called to serve.

With courage and faith,

A handwritten signature in cursive script that reads "Barbara D. Dunn". The ink is dark and the signature is fluid and legible.

Barbara D. Dunn

Our logo for the capital campaign features our bell tower, a sapling, and a shovel and hammer. The Bell Tower is a distinct and recognizable structure, unique to and highly associated with St. Paul's. It represents extensions to our church building, having been built and situated where it is since a bell tower with the bell in it could not be physically supported atop the church building. In our logo, it also reminds us that we are preparing to build a new wing, since we have and anticipate more activities that require meeting space at the church than we currently have room to support. The Bell Tower reminds us of who we are: St. Paul's Lutheran Church.

The sapling represents new life and growth. Growth has been a theme at St. Paul's for several years now. We continue to welcome new members and expand our ministries, and want to continue fostering the spiritual growth of everyone here. Just as we nurture young plants so that they can flourish, so we nurture the people and ministries of our church. The sapling reminds us that we are "growing in faith."

The shovel and hammer represent our anticipated building activities. A shovel is used for groundbreaking and symbolizes establishment of the foundation of not only our future building, but the deepening and strengthening of our faith. The hammer represents construction upon that foundation. Firm in our spiritual and physical foundations, we can build up and strengthen the body of Christ as we expand our space to worship, fellowship, and learn. The tools remind us that we are "building for tomorrow."

# Growing in Faith

## A BRIEF HISTORY OF ST. PAUL'S



St. Paul's is a suburban church, nestled in historic Lionville. Our roots and values date back to 1838 when the Lutheran and German Reformed (now United Church of Christ) began worshipping together in a schoolhouse that they built, which still stands on the UCC property. In 1852, the Lutheran congregation purchased land to create St. Paul's Evangelical Lutheran Church in Lionville, Chester County, Pennsylvania. This church building, which has since become Warwick Daycare, opened its doors to the congregation in 1853. After more than 100 years of faithful worship, a new facility was desired.

The current church building, located next to the original church, opened in 1979. It consists of a modern sanctuary abutted to an older barn structure that has been modified to include office space, classrooms, kitchen areas, and fellowship rooms. As a congregation, we always strive to fulfill the Christian needs of the community around us by providing a variety of ministries and services. Therefore, the building is also used for non-church community activities such as scouts and other local support groups.



As a member of the Evangelical Lutheran Church in America, Southeastern Pennsylvania Synod, St. Paul's has undergone major changes over the years since its founding. Today the church is fortunate to serve people throughout the surrounding communities such as Chester Springs, Exton, Downingtown, Glenmoore, Eagle, Phoenixville, and West Chester. As these communities experience rapid population growth, the congregation of St. Paul's is also growing. As the surrounding communities grow and evolve, so must our church and our ministries. Our Growth Vision, outlined on the following pages, will help St. Paul's mission: Announce the good news of Jesus Christ; Celebrate Christ's gracious gifts; Teach and nurture so all may grow in understanding of the gospel; Serve and minister to the needs of all people.



*"I really like your mission statement, and the congregation makes an honest effort to welcome folks. I like the Biblical preaching, the printing of the entire service in the program, and retention of the traditional liturgy. True to Lutheranism. If I lived here, I'd make St. Paul's my first consideration for my home church."*

*—Pastor Ron Morgan, visitor at St. Paul's traditional service, March 2011*

# Building for Tomorrow

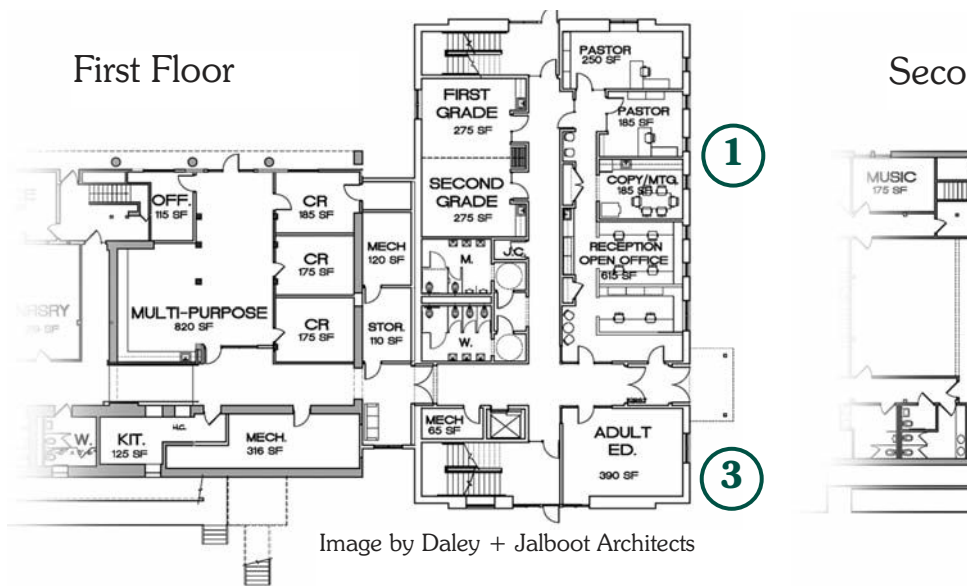
## OUR GROWTH VISION

Growth is inevitable. We all grow. Spiritually, physically, mentally. We all grow.

Despite the growth in our community, it has been quite some time since St. Paul's has expanded its facilities. Our existing physical space does not provide sufficient room for our current ministries and our expected spiritual growth, and the growth of our ministries' outreach to the community. Our Growth Vision was developed with the leaders and ministries of St. Paul's and addresses our immediate need for Christian Education space and for expanding our fellowship rooms, narthex, and worship areas.

At St. Paul's, we follow seven basic faith practices in our discipleship. We pray to lift our concerns and thanksgiving; we study Scripture as we continue to learn and grow; we worship together and gather around God's table to be nourished through the Word and Sacraments; we invite others in joy and sing "all are welcome," that we may share what has been shared with us; we encourage and lift each other in love as Christ has lifted us; we serve those in need without discrimination; so that as we have been blessed, we may be a blessing. We continue to welcome new members and want to continue nurturing our ministries and fostering the spiritual growth of everyone here.

From Sunday School programs to Bible Study to our unbelievable Troupe of Acts, we need physical space to house all of the programs that St. Paul's offers. Regardless of the shape or size of our church building, it is truly the members of St. Paul's who make it a meaningful and special place of worship. Yet by providing the space to gather and interact, we will undoubtedly further the spiritual connections that brings us to St. Paul's each and every week.



- 1 Additional offices in the new building will avail new and existing office areas for a future second pastor and supporting staff, and ease shared office use by our ministries.



- 4 Expanded Christian Education facilities will provide 11 additional, larger classrooms that will be attractive and functionally efficient for students and teachers, and allow for programs to expand. These new rooms will provide flex space for multipurpose and community use. We will have more opportunity to develop new programs that better serve the evolving needs of the congregation. The new building will also be more efficient in its energy use and easier to maintain than our current buildings.



Image by Chester Valley Engineers

nd Floor

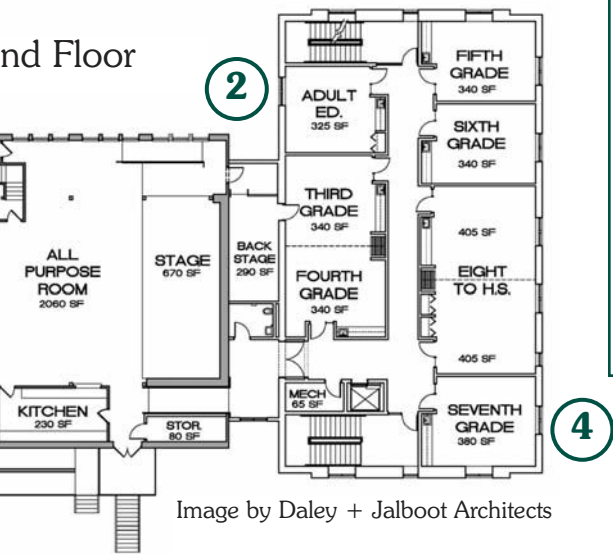


Image by Daley + Jalboot Architects

### ESTIMATED CONSTRUCTION COSTS FOR THE PROJECT

Sitework	\$ 500,000
Building	\$ 1,500,000
Subtotal	\$ 2,000,000
25% Contingency	\$ 500,000
<b>Grand Total</b>	<b>\$2,500,000</b>

Contingency includes final A/E fees, permits, etc.



**2** The capacity for large congregational gatherings, play productions, and multipurpose use will be expanded by renovating our second floor Fellowship space. The addition will create direct access to backstage areas for theatre use.

**3** Our church will become more visitor-friendly by having additional parking and providing improved handicapped access, including an elevator in the new building.



# The “Faith Promise”

“Where your treasure is, there your heart will be also.”

—Matthew 6:21



## Responding to God’s Blessings

The success of our capital campaign rests on the prayers and support of every member of St. Paul’s. Pray every day for God to help us and guide us in our sacrifice as it relates to our time, ability, and financial resources. Giving to the work of God is a very personal decision that requires prayerful consideration. Give because you are a responsible steward of God’s gifts and a cheerful follower of Christ. Whether your ability to give is great or small, your personal sacrifice is necessary for a successful campaign. Consider giving one share—\$28 per week over three years, per household—or as the Holy Spirit guides you, and remember that our goal is not equal giving but equal sacrifice. Have faith that we can accomplish this work together!

A “Faith Promise” is a gift commitment that represents a sacrifice, in addition to your regular offering, to support this special project. It is a commitment made by you and your household, after prayerful consideration, to participate in and contribute to God’s work at St. Paul’s, with thanksgiving and awareness of God’s abundant gifts to you. The amount of your faith promise is personal. The total you promise may be given over the three-year campaign period. Should your circumstances change, your promise may be revised, up or down, at any time during our campaign. The purpose of the Faith Promise Card is to give St. Paul’s an idea of how much we can expect to attain from our congregation, so that we can accurately plan our mission and ministries. The Faith Promise Card is not a legal document and it is not binding. We ask for the declaration of your promise only so that we can be good stewards of our resources.

## Faith Promise Plans Guide

The commitment period is 150 weeks / 3 years in duration

- \$ 7/week or \$ 350/year = \$ 1,050 over 3 years
- \$ 14/week or \$ 700/year = \$ 2,100 over 3 years
- \$ 21/week or \$ 1,050/year = \$ 3,150 over 3 years
- \$ 28/week or \$ 1,400/year = \$ 4,200 over 3 years**
- \$ 42/week or \$ 2,100/year = \$ 6,300 over 3 years
- \$ 56/week or \$ 2,800/year = \$ 8,400 over 3 years
- \$ 84/week or \$ 4,200/year = \$ 12,600 over 3 years
- \$ \_\_\_\_/week or \$ \_\_\_\_/year = \$ \_\_\_\_ over 3 years

A Faith Promise card will be sent to you or is available through the Church office. All Faith Promise gifts are tax deductible and you will receive an annual statement.

# Questions You Might Have

## **In addition to praying for God to bless St. Paul's Building Program, how may I support the program?**

Along with your fellow congregation members and friends of St. Paul's, you will be asked to make a Faith Promise. A Faith Promise is a commitment of financial giving towards St. Paul's Building Program that is in addition to your regular offering and represents a sacrifice in support of God's work. It is up to you to decide, with prayerful thought and reflection, the Faith Promise that best fits your ability to contribute.

## **When will I start making Faith Promise contributions and how long does this last?**

According to our current plan, we will start receiving contributions in 2011 and the campaign will cover 3 years. You may, however, give your Faith Promise at any time.

## **How much am I expected to give?**

This is a personal decision for you to make. Keeping in mind God's gifts to you, please give according to your means and your faith. The information in this brochure is designed to assist you in making this decision. If your circumstances change, you may revise your Faith Promise at any time.

## **Can I give as I am able without a Faith Promise?**

Yes, you can do so. However, please keep in mind that in order to proceed with St. Paul's Building Program, we need a reasonably accurate figure of anticipated contributions.



## **Why is my Faith Promise in addition to my annual pledge and regular offerings?**

It is important to understand our regular offerings are used to support the day-to-day ministry and operation of St. Paul's. The Faith Promise will be used to support the Building Program.

## **Are Faith Promise contributions tax deductible?**

Yes, if you itemize charitable contributions on your tax return. You will receive specifically marked envelopes that you can use to make your contributions, and an annual statement will be provided.



Gracious God,

You have so richly blessed us, and have called us to be a blessing to others. We give thanks for those who have gone before us, who provided the facilities we now enjoy and use to your glory. Give us glad and generous hearts so that we can continue in their footsteps, providing for the needs of today and the opportunities you will give us in the future. Bless us and our whole congregation as we grow in faith and build for tomorrow. Inspire us with your Spirit. Guide us in your ways. Encourage us to be involved. Move us to give in ways that make a difference—for your work, and in our lives. We ask this trusting in your promises, and asking for your blessing. In the name of Jesus we pray.

AMEN



***“How excellent are the Lord’s faithful people!”***

***(Psalm 16:3)***



**Growing in Faith,  
Building for Tomorrow**

**St. Paul’s Lutheran Church, 104 S. Village Ave., Exton, PA 19341**

610-363-6264

<http://www.stpaulslionville.org>

[pledge@stpaulslionville.org](mailto:pledge@stpaulslionville.org)